



## IMI: Researching International Migration in the 21<sup>st</sup> Century

APRIL-JULY 09

VOLUME 2, NUMBER 1



This pirogue washed up on the island of Santiago, Cape Verde. It carried Senegalese migrants, who all survived. Not so the 200 other 'boat people' who died in the Mediterranean sea and Atlantic Ocean in separate incidents during the course of 2008. Photo credit: Jason Cohen 2009

### New DIIS Brief by Oliver Bakewell challenges the current diaspora and development hype

In this new brief Oliver Bakewell, Senior Research Officer at IMI, raises four questions that challenge uncritical enthusiasm for diasporas' increased involvement in development: 1) Who is in the diaspora? 2) Where is the diaspora? 3) How does diaspora engagement affect accountability? And 4) What ideas of development are being used? To read the Brief [click here](#)

### Professor Stephen Castles talks about incentives for return migrants, BBC World Service

Stephen Castles took part in a debate on the BBC World Service programme 'World Have Your Say' on June 24th to discuss the issue of government incentives for return migrants. To listen to the broadcast or download the podcast [click here](#)

### Director's Note

*The last few months have been an exciting period for the IMI. Three years of hard work in developing project ideas have come to fruition with a number of major grants. Some of these are highlighted in the current Newsletter, while detailed reports on others will be presented in future. Special congratulations go to Hein de Haas for obtaining one of the very competitive European Research Council Fellowships. While the grants have been awarded for specific projects, they will all contribute to the IMI's aims, as laid out in [Towards a New Agenda for International Migration Research](#) (2006). IMI aims to help create a more fundamental understanding of the forces driving global migration in the 21st century, and to work with policy-makers and civil society organisations, to facilitate new strategies and improved global governance in the migration field.*

*On a personal note, I will be stepping down as Director of IMI at the end of August 2009. I will take up a Research Chair in Sociology at the University of Sydney, in order to carry out research on Social Transformation and International Migration. The project will examine how local communities and national societies respond to global forces of change, and will include case studies in Mexico, Ghana, S. Korea and Australia. I will remain as Associate Director of IMI, and I look forward to linking my own work with the Institute's research programme. I am delighted to announce that I will be succeeded as Director of IMI by Professor Robin Cohen, who is one of the UK's most prominent migration researchers. Read his profile on page four.*

*Stephen Castles, Director IMI*

## Two new major grants awarded to IMI

### Dr Hein de Haas awarded ERC grant

Dr Hein de Haas, a Senior Research Officer at IMI, has been awarded a major research grant from the European Research Council (ERC) for his project **The determinants of international migration: A theoretical and empirical assessment of policy, origin and destination effects (DEMIG)**. Dr de Haas will use the grant to establish a research team studying the determinants of international migration through a theoretical and empirical assessment of policy, origin and destination effects. This 5 year project will seek to answer the question: how do migration policies of receiving and sending states affect the size, direction and nature of international migration? This will be achieved by embedding the systematic empirical analysis of policy effects into a comprehensive theoretical framework of the forces driving international migration. For more information about the project and the grant [click here](#).

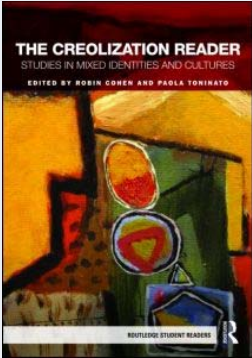
### IMI project selected for funding by the NORFACE Research Programme on Migration in Europe

The IMI is pleased to announce that its project **Theorizing the Evolution of European Migration Systems (THEMIS)** has been selected for funding by the NORFACE Research Programme on Migration in Europe - Social, Economic, Cultural and Policy Dynamics. By investigating migration dynamics and migrants' agency in their continuous interplay with structural conditions in origin and destination contexts, this project aims to achieve an improved understanding of the heterogeneity of the evolution of migration systems across migrant groups, localities and time. For further information about this project and the NORFACE partnership [click here](#).

IMI is part of Oxford University's [HDepartment of International Development \(ODID\)H](#), and the [HJames Martin 21<sup>st</sup> Century SchoolH](#).

## Book Alert

*The Creolization Reader: Studies in Mixed Identities and Culture*  
Edited by Robin Cohen and Paola Toninato



What happens to migrant identities and cultures once newcomers settle? There are three broad trajectories. There can be a clash of cultures. Cultures can co-exist, but often with little interaction, in parallel universes. Finally, cultures can merge to create new hybridized or creolized alternatives, which are not reducible to either parent culture. This last possibility is the subject of a major new Reader edited by Robin Cohen and Paola Toninato. The editors argue that, 'creolization' is increasingly used to analyse 'cultural complexity', 'cosmopolitanism', 'hybridity', 'syncretism' and 'mixture', prominent and growing characteristics of the global age. *The Creolization Reader* captures all these meanings. The Reader illuminates old creole societies and emerging cultures and identities in many parts of the world. The book is divided into five main sections covering the following key topics:

Concepts and Theories  
The Creolized World  
Popular Culture  
Kindred Concepts  
The Creolizing World

*The Creolization Reader* is multi-disciplinary and includes 28 readings and original contributions drawn mainly from history, sociology, development studies, anthropology and cultural studies.

*The Creolization Reader* will be published by Routledge in London and New York in early September, 2009

## In-Focus:

### MacArthur Programme 'African Perspectives on Human Mobility': Research Support

The four African partner countries (Ghana, Nigeria, Morocco and the Democratic Republic of Congo) are currently carrying out fieldwork. In June, IMI's research assistant Gunvor Jónsson and Mohamed Aderghal from the Morocco team visited the team in Lubumbashi in the DRC to attend a workshop and pilot fieldwork.

#### Capacity building and training workshop, University of Lubumbashi, June 2009

The DRC team had organised a two day internal workshop on methods for coordinators and assistants. The objectives of the workshop were to:

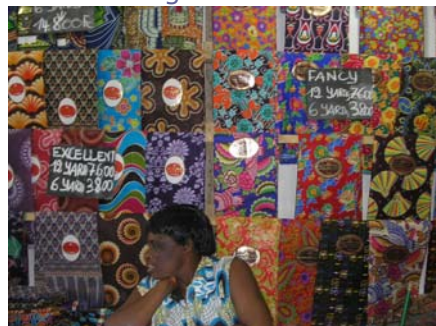
- Strengthen the capacity of junior researchers involved in data collection, particularly with regards to theoretical and methodological debates on migration
- Present qualitative and quantitative methods of data collection taking into account the context of the city of Lubumbashi
- Exchange on the difficulties encountered during preliminary fieldwork (carried out during April 2009) and the methodological strategies that can be adopted to avoid such difficulties



The coordinators, Prof. Germain Ngoie Tshibambe and Prof. Vwakyankazi Mukohya, presented overviews of previous and current activities, and junior researchers involved in data collection spoke about the difficulties and challenges encountered during preliminary fieldwork. Prof. Mohamed Aderghal from the Moroccan research team was invited to speak about the Moroccan research project currently being carried out in the city of Fes. Ms Gunvor Jónsson was invited to speak about ethical aspects of fieldwork. Other speakers included experienced researchers from the University of Lubumbashi.

#### Pilot fieldwork, Lubumbashi, June 2009

After the workshop, Prof. Aderghal and Ms Jónsson accompanied different teams of junior researchers during two days of pilot fieldwork at various sites in Lubumbashi. Three interviews were held with respectively, a successful Malian entrepreneur who owned a butchery and a grocery store and traded in gem stones in an area known for its strong presence of West Africans; an Indian immigrant who ran a shop with fabrics in the city centre; and an



internal migrant who had moved to Lubumbashi after retiring from a life long career with the military. After each pilot session, the teams and resource persons discussed how to improve the techniques and evaluated the collected data. A final feedback session helped identify methodological problems and potential solutions, and discuss how to move forward with the fieldwork. The main challenge will

be how to establish sample frames to collect data on migrants in Lubumbashi. IMI is supporting all four teams in their data collection and developing coherence between the projects. For additional information on the African Perspectives on Human Mobility programme, visit the [IMI website](http://www.imi.ox.ac.uk) or contact Gunvor Jónsson at [gunvor.jonsson@qeh.ox.ac.uk](mailto:gunvor.jonsson@qeh.ox.ac.uk) or Sally Winiarski at [sally.winiarski@qeh.ox.ac.uk](mailto:sally.winiarski@qeh.ox.ac.uk)

## **HAVE YOU READ...**

IMI regularly publishes papers and reports in the [Publications](#) section of its website. IMI encourages researchers, practitioners, policy makers, and all others to freely download copies of its reports and working papers. Below is a list of recent publications:

Darshan Vigneswaran.

[Incident Reporting: Experimental Data Collection Methods and Migration Governance](#)

Oliver Bakewell. [South-South Migration](#)

Hein de Haas. [Mobility and Human Development](#)

Oliver Bakewell. [DIIS Brief: Which Diaspora for Whose Development?](#)

Transatlantic Dialogues on Migration and Development:

[-Report of Study Tour in Zacatecas, Mexico](#)  
[-Policy Brief no.2](#)

Hein de Haas. [Morocco: Migration profile](#)

Stephen Castles and Simona Vezzoli. [The global economic crisis and migration: temporary interruption or structural change?](#)

Stephen Castles and Mark J. Miller. [Migration in the Asia-Pacific Region](#)

## **UPDATES:**

### **Transatlantic Dialogues on Migration and Development Issues: new publications and extended activities**

The project 'Transatlantic dialogues on migration and development issues: the Mexico-US and Morocco-EU experiences' continues its activities with the publication of a report and a policy brief, which focus on the activities and outcomes of the comparative study-tour held in Zacatecas, Mexico in March 2009. To view the publications, [click here](#).

Encouraged by the positive results of the first study-tour and workshop in Zacatecas, Mexico, the IMI is in the process of organising a similar event that will take place in Ouarzazate, Morocco in March 2010. The event will allow participants to continue their observations in the field and produce further empirical evidence for future comparative investigations. The 2010 study-tour and workshop will be organised with the support and the generous funding of the Deutsche Gesellschaft für Technische Zusammenarbeit (GTZ) GmbH and the Fondation Hassan II pour les Marocains Residents à l'Étranger. More information on this event will be available in the near future on the IMI website.

### **Global Migration Futures**

This project aims to assess future global migration trends and their effects on European receiving countries and sending countries mainly located in Africa, Asia and the Middle East through the elaboration of scenarios, taking account simultaneously of likely future social, cultural, economic, political, demographic and environmental changes in sending, transit and receiving countries. The project is in its initial phase and the first activities will be announced on the IMI website shortly. For more information [click here](#).



#### **New Research Officer – Dr. Carlos Vargas-Silva**

Dr Carlos Vargas-Silva has recently joined the International Migration Institute as a Research Officer for the [Global Migration Futures Project](#). His research interests are economic development and migration. He is also interested in assessing the future global and regional migration trends and their effects on receiving and sending countries.

### **Transnational Migrant Organisations (TRAMO):**

#### **Fieldwork and study tour in India**

The fieldwork phase for the TRAMO project is currently under-way. Three transnational organisations in the UK have been investigated so far: the Indian Workers Association in Birmingham, the Sikh Human Right Group in Southall, and the Polish Scout Association in Hammersmith. In-depth interviews have been carried out with committee members and experts about the history and functioning of the associations. These interviews are complemented with a network analysis during which respondents are asked to describe their work on a day to day basis with their partners.

Fieldwork in India was carried out in June, when interviews were held with field partners of the Sikh Human Right Group and the Indian Workers Association Birmingham. Similar investigations have been done in France, in particular with the Gurudwara of Bobigny, working actively with SHRG on the "Turban affair" (a legal case made against the French State by a group of Sikh students excluded for wearing their turbans at school), and with the French branch of the Polish Scout movement. For more information on TRAMO [please click here](#).

## Join IMI's Researcher Directory!

Our online Researcher Directory provides access to IMI's academic contacts with expertise in African migration. The directory stores information on the names of researchers, experts and institutions specialized in African migrations; their areas of expertise and research interests; detailed contact information; and their publications. To access the Directory [click here](#).

Researchers with an expertise in African migrations who are interested in being included in the directory should **send a request to [imi@geh.ox.ac.uk](mailto:imi@geh.ox.ac.uk)**.

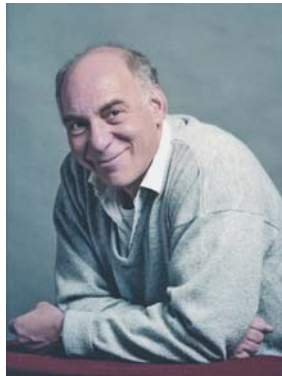
### **Postal Address:**

International Migration  
Institute  
Oxford Department of  
International Development  
(QEH)  
University of Oxford  
3 Mansfield Road  
Oxford OX1 3TB

### **Office:**

Old Indian Institute,  
34 Broad St  
Oxford OX1 3BD  
Ph.: +44 (0) 1865 287311  
Fax: +44 (0) 1865 287435  
Email: [imi@geh.ox.ac.uk](mailto:imi@geh.ox.ac.uk)  
Website: [www.imi.ox.ac.uk](http://www.imi.ox.ac.uk)

## New Director-designate – Prof. Robin Cohen



IMI is pleased to announce the appointment of Robin Cohen as Director-designate. He will be assuming office on 1 September 2009, while Stephen Castles continues to be involved in the institute's work as Associate Director. Robin has been working closely with colleagues at IMI over the last few months in his role as Senior Researcher and is well known in the migration studies community internationally. He remarks 'I'm not quite as much of a veteran as Stephen, who published a major work on migration as early as 1973. I worked first on African trade unions and labour history and it was not until 1987 that I published *The New Helots*, a global study looking at unprotected labour migrants.'

Robin's background in Africa (he was born in South Africa and held his first academic position at the University of Ibadan, Nigeria) and his global perspective fits well with IMI's evolving profile. In addition to *The New Helots*, Robin has published a number of books in the field, including *Contested Domains: debates in international labour studies* (1991), *The Cambridge Survey of World Migration* (edited, 1995), *Frontiers of Identity: the British and the others* (1994), *Global Diasporas: an introduction* (1997, rev. edition, 2008) and *Migration and Its Enemies* (2006).

Robin has always been interested in how the identities and cultures of host and newcomer populations are altered through migration and he will add this element to IMI's strengths in the processes, drivers and consequences of international migration. 'It will be a great pleasure', he adds, 'to join such a talented group of colleagues who are initiating pioneering work in the field.'

## UPCOMING MIGRATION EVENTS

### Migration Conferences in Oxford

The **Centre on Migration, Society and Policy (COMPAS)** at the University of Oxford is holding its **Annual Conference** from **21-22 September 2009**. The central questions to be addressed by the conference are: how the current crisis affects the movement of people worldwide, and whether it will accentuate trends already underway or precipitate the formation of a new migration order. The conference aims to take up where the 2008 Annual Conference on theory left off, bringing together a range of leading academics, analysts, policy makers, practitioners and research students to test theory and concepts against the latest evidence in the migration field. For more details see <http://www.compas.ox.ac.uk/events/annual-conference-2009/>

The **Refugee Studies Centre (RSC)** at the University of Oxford in collaboration with the Humanitarian Policy Group at the Overseas Development Institute (HPG) is organizing an **international conference** on the theme of **Protecting People in Conflict & Crisis: Responding to the Challenges of a Changing World**. This conference aims to convene a broad range of academic researchers, humanitarian practitioners, policy makers and civil society representatives to review the state of policy and practice in the broad field of humanitarian protection as we look forward into a potentially turbulent 21st Century. The conference will take place on **22-24 September 2009** and will feature a range of keynote lectures, plenary discussions and expert panel debates, paper sessions and practice updates. The **call for papers** is now out and can be accessed on the website at <http://www.rsc.ox.ac.uk/>

[Join our list](#) • [Unsubscribe from our list](#) • [Comments and suggestions](#)

**Disclaimer** - This e-newsletter is not meant to be an exhaustive source of information. It rather provides information that is relevant to IMI's work. Should you have information on additional relevant initiatives (i.e. programmes, scholarships, etc.), you are encouraged to contact IMI's staff at [imi@geh.ox.ac.uk](mailto:imi@geh.ox.ac.uk). IMI reserves the right not to promote initiatives that do not fit within IMI's scope of work. The views and opinions expressed by third parties to whom IMI has provided links do not necessarily reflect those of IMI. IMI does not give out or sell its subscribers' names or e-mail addresses to third parties.

This e-newsletter is a product of the International Migration Institute of the University of Oxford, UK.  
Do not reply to this email. Subscribe for free at <http://www.imi.ox.ac.uk>.  
Unsubscribe by sending a blank e-mail to [imilist-unsubscribe@maillist.ox.ac.uk](mailto:imilist-unsubscribe@maillist.ox.ac.uk).  
For comments, contact us at +44 01865 287310 or [gunvor.jonsson@geh.ox.ac.uk](mailto:gunvor.jonsson@geh.ox.ac.uk)